



## **POSTOPERATIVE INSTRUCTIONS ELBOW – MCL RECONSTRUCTION**

**PLEASE READ THESE INSTRUCTIONS COMPLETELY AND ASK FOR CLARIFICATION IF NECESSARY -  
DIRECT QUESTIONS TO YOUR NURSE BEFORE LEAVING THE SURGERY CENTER OR VIA  
PHONE/EMAIL TO DR COLE'S STAFF AFTER ARRIVING HOME**

### **WOUND CARE**

- You will be put in an immobilizing splint on the day of surgery. You will follow up in office 7-10 days from surgery to have your splint and dressing removed.
- 48 hours after surgery it is ok to shower. **THE SPLINT MUST REMAIN DRY.** Please cover with a plastic bag and tape for showering.
- After the splint is removed, you will transition into a hinged elbow brace. The incision will remain covered with clear band-aids (BandGrip) until day 12.
- The BandGrip must remain dry. For showering, cover the BandGrip with plastic wrap or large tegaderm. Do not use Band-Aids to cover the BandGrip for showering
- If BandGrip does get wet, dry it off after showering.
- **BANDGRIP SHOULD REMAIN IN PLACE UNTIL 12 DAYS OUT FROM SURGERY.** To remove the BandGrip on day 12, please see Dr. Cole's BandGrip removal animation at [briancolemd.com](http://briancolemd.com) under Patients/Medical Professionals tab.
- After removing the BandGrip on day 12, cover your incision with ½ inch steri-strips, placed perpendicular to incision for an additional 3-5 days. Steri-strips can be purchased at the drug store. Butterfly strips can be used in place of steri-strips.
- On day 14, you may submerge incisions in water and shower with incisions uncovered.
- BandGrip is used in place of sutures and no suture removal is required (unless you were told otherwise).

### **MEDICATIONS**

- You can begin the prescription pain medication provided to you upon arriving home and continue every 4-6 hours as needed for pain.
- Zofran (Ondansetron) can be taken if needed for nausea. If you are having problems with nausea and vomiting, contact the office (312-243-4244 – ask for Dr. Cole's team to be paged).
- Common side effects of the pain medication include nausea, drowsiness, and constipation. To help minimize the risk of side effects, take medication with food. If constipation occurs, consider taking an over-the-counter stool softener such as Dulcolax or Colace.
- Do not drive a car or operate machinery while taking the narcotic medication.

You have been prescribed 4 medications for use post-operatively, unless discussed otherwise:

1. **Norco (Hydrocodone-Acetaminophen):** Take 1-2 tablets every 4-6 hours as needed for pain.
2. **Zofran (Ondansetron):** Take as prescribed if needed for nausea.
3. **Ibuprofen:** If you have no personal history of adverse response to anti-inflammatories (NSAIDs), take 1 800mg or 600mg tablet every 8 hours with food to help reduce swelling and pain.

4. **Aspirin 81mg:** Please take one (1) 81 mg baby aspirin twice daily for 30 days following surgery. This is to minimize the risk of blood clot (extremely rare). If you are under age 16 or unable to take aspirin for other medical reasons, you do not need to take aspirin after surgery.

## **ICE THERAPY**

- Beginning immediately following surgery, use the ice machine (when prescribed as directed for the first 2-3 days following surgery. Ice at your discretion thereafter.
- When using “real” ice, avoid direct skin contact > 20 mins to prevent damage / frostbite of the skin. Check the skin frequently for excessive redness, blistering, or other signs of frostbite. When using the ice machine, it is okay to ice continuously as long as you check the skin frequently.
- For technical questions regarding the ice machine, please contact our DME store directly.

## **ACTIVITY**

- For the first 7-10 days after surgery, you will remain in immobilizing splint. You will schedule an in-person splint removal visit 7-10 days from surgery.
- After your first postoperative visit, you will transition to a hinged elbow brace that you will wear at all times until 6 weeks from the day of surgery. You may remove the elbow brace for hygiene.
- It is ok to sleep however you are comfortable.
- Do not engage in activities which increase elbow pain over the first 7-10 days following surgery.
- NO driving. You will be cleared to drive after the first postoperative visit if narcotic pain medication has been discontinued.
- Okay to return to work when ready and able. Please notify the office if written clearance is needed.
- Air travel is permitted 5 days after surgery. Air travel and immobility increase the risk of blood clots. Unless you have been previously instructed to avoid aspirin products for medical reasons, or if you are under age 16, ensure that you are taking 81 mg baby aspirin twice daily beginning the day after surgery to minimize the risk of blood clot.

## **EXERCISE**

- Begin exercises 3x daily starting the day after surgery (wrist flexion/extension) unless otherwise instructed. See last page for reference. If the exercises cause pain, stop and try again later in the day.
- Elbow stiffness and discomfort is normal following surgery.
- Formal physical therapy (PT) will begin after your first postoperative visit or no sooner than 7 days after surgery. Visit [rushortho.com](http://rushortho.com) to see our recommended Midwest Orthopaedics at Rush PT locations. Reach out to your chosen PT location as soon as possible to schedule PT to start after your first post-op visit.

## **DIET**

- Begin with clear liquids and light foods (jello, soup, etc.).
- Progress to your normal diet as tolerated.

## **FOLLOW-UP CARE/QUESTIONS**

**EMERGENCY HOTLINE #312-243-4244**

- Someone from Dr. Cole's team will call you on your first day after surgery to address any questions or concerns. If you have not been contacted within 48 hours of surgery, please call 312-432-2379 or email [colepa@rushortho.com](mailto:colepa@rushortho.com)
- Email any non-emergency questions to [colepa@rushortho.com](mailto:colepa@rushortho.com) for the fastest reply. If e-mail is not an option please call the practice at 312-432-2379.
- Unless otherwise specified, initial postoperative visit will be an in-person PA visit 7-10 days from surgery. If you do not already have a postoperative appointment scheduled, please contact the scheduler during normal office hours at 708-236-2701 or email [coleadmin@rushortho.com](mailto:coleadmin@rushortho.com) to arrange an in-person visit with a PA 7-10 days from surgery.

### **\*\*EMERGENCIES\*\***

- Contact Dr. Cole's practice hotline at 312-243-4244 if any of the following are present:
  - Unrelenting pain, despite taking medications as prescribed
  - Fever (over 101°). It is normal to have a low-grade fever following surgery
  - Continuous drainage or bleeding from incisions (a small amount of drainage is expected)
  - Difficulty breathing
  - Excessive nausea/vomiting uncontrolled by Zofran

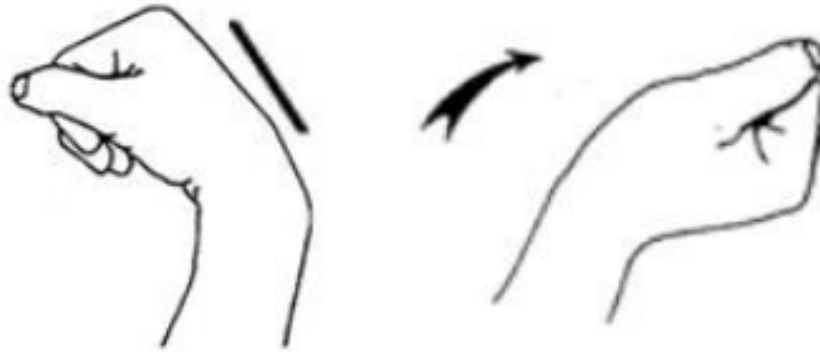
**DO NOT CALL THE HOSPITAL OR SURGICENTER FOR EMERGENCIES**

**IF YOU HAVE A NEED THAT REQUIRES IMMEDIATE ATTENTION, PROCEED TO THE NEAREST EMERGENCY ROOM**

**EMERGENCY HOTLINE #312-243-4244**

## **ELBOW POST OPERATIVE EXERCISE**

### **WRIST FLEXION / EXTENSION**



Actively bend wrist forward.  
Then backwards as far as you can.  
Repeat 10-15 times. Do 3 sessions per day.

**EMERGENCY HOTLINE #312-243-4244**